



Innovation

Technology

Product

Development

Research

科技支援計劃概覽 Technology Support Programmes at a Glance

你的企業能如何受惠？
How Can Your Enterprise Benefit ?



創 新 科 技 署
Innovation and
Technology Commission



目錄

簡介 Introduction	1
你的企業能如何受惠？	
(I) 研究及發展 (研發)	2
(a) 內部研發	2
(b) 與本地大學及其他本地公營科研機構合作	2
(c) 投資研發現金回贈	2
(d) 為合資格研發開支提供額外稅務扣減	3
(II) 科技應用	3
(III) 其他支援	4
(IV) 專為科技初創企業而設	5
為其他業務提供的支援	6

How Can Your Enterprise Benefit?

(I) For Research & Development (R&D)	8
(a) In-house R&D	8
(b) Working with Local Universities and Other Local Public Research Institutes	8
(c) R&D Cash Rebate	8
(d) Enhanced Tax Deduction for Qualifying R&D Expenditures	9
(II) For Technology Adoption	9
(III) Other Support	10
(IV) Specifically For Technology Start-ups	11
Support for Other Business Activities	12

簡介 Introduction

香港特別行政區政府一直致力支援香港的創新及科技(創科)發展，並透過創新科技署管理的「創新及科技基金」，資助企業的內部研發工作、與本地大學及其他本地公營科研機構合作的研發、科技應用、聘用研究人才、專利申請等。

我們明白科技初創企業在成立初期，通常需經過多個成長及發展階段，所需資金亦會隨着企業成長而增加。就此，創新科技署、香港科技園公司及數碼港亦已推出了多項計劃，為科技初創企業提供財政等方面的支援。

此外，工業貿易署亦為企業在其他業務範疇包括市場推廣及發展品牌等方面提供支援。

我們期望這本小冊子能為企業提供上述科技支援計劃的概覽。詳情請瀏覽相關的網站。

The Government of the Hong Kong Special Administrative Region is committed to supporting the development of innovation and technology ("I&T") in Hong Kong. Through the Innovation and Technology Fund administered by the Innovation and Technology Commission, we provide funding support for enterprises for their in-house research and development ("R&D"), R&D collaboration with local universities and other local public research institutes, technology adoption, engagement of research talents, patent application, etc.

We understand that technology start-ups normally need to go through a number of stages of growth and development in their initial years, and they require an increasing level of investment as they grow. In this connection, the Innovation and Technology Commission, the Hong Kong Science and Technology Parks Corporation ("HKSTPC") and Cyberport have launched a number of programmes to provide support for technology start-ups.

In addition, the Trade and Industry Department offers support to enterprises in other business activities such as marketing and branding.

We hope this booklet will offer an overview of the aforementioned technology support programmes for enterprises. For details, please visit the relevant websites.



你的企業能如何受惠？

(I) 研究及發展 (研發)

(a) 內部研發

企業支援計劃 ¹	<ul style="list-style-type: none">• 每個項目的資助上限為 1,000萬元• 以等額出资方式資助• 企業可擁有項目的知識產權• 企業可要求預先發放撥款，上限為批出的首六個月等額資助的 50% 或 50萬元，金額以較低者為準
---------------------	--

(b) 與本地大學及其他本地公營科研機構合作

夥伴研究計劃 ¹	<ul style="list-style-type: none">• 企業投入項目總成本 30% 至 50%，其餘由創新及科技基金承擔• 若企業投入項目總成本的 50%，企業可擁有項目的知識產權
創新及科技支援計劃 (平台項目) ¹	<ul style="list-style-type: none">• 與本地公營科研機構合作• 企業投入項目總成本的 10%，其餘由創新及科技基金承擔• 企業可在與其投入的項目成本相稱的有利條款下使用項目成果，例如優先取得相關研發成果、可獲特許授權費折扣等

(c) 投資研發現金回贈

投資研發現金回贈計劃 ¹	<ul style="list-style-type: none">• 就以下投入的資金獲取 40% 現金回贈：<ul style="list-style-type: none">- 為上述(I)(a)及(b)的研發項目投入的資金；或- 委託本地公營科研機構進行的研發項目
-------------------------	--

(d) 為合資格研發開支提供額外稅務扣減

為合資格研發開支
提供額外稅務扣減

- 為企業由2018年4月1日起的合資格研發開支提供兩級制的額外稅務扣減，企業就合資格研發開支總額的**首200萬元可獲300%稅務扣減，餘額則可獲200%扣減**
- 扣稅金額不設上限，並適用於所有企業

(II) 科技應用

科技券¹

- 資助本地非上市企業/機構使用科技服務和方案，以
 - 提高生產力；或
 - 將業務流程升級轉型
- 每間企業/機構的資助上限為 **60萬元**
- 以 3 (政府) : 1 (企業/機構) 的配對方式提供資助
- 企業可要求預先發放不多於獲批資助額四分之一的撥款

公營機構試用
計劃¹

- 在公營機構試用以下項目的研發成果，以支持本地研發成果的實踐及商品化
 - 已完成的夥伴研究計劃研發項目
 - 香港科技園公司及數碼港的培育公司和畢業生租戶的研發項目(每個項目的資助上限為 **100萬元**)
 - 在香港進行研發活動的科技公司的研發項目(每個項目的資助上限為 **100萬元**)

再工業化資助
計劃¹


- 資助生產商在港設立智能生產線
- 每個項目的資助上限為 **1,500萬元**
- 以 1 (政府) : 2 (企業) 的配對方式提供資助

(III) 其他支援

專利申請資助計劃 ¹	<ul style="list-style-type: none">資助本地成立的公司或香港永久居民首次為其發明申請專利每宗獲批申請的資助上限為 25萬元
研究人才庫 ¹	<ul style="list-style-type: none">資助以下企業/機構聘請最多四名研究人才<ul style="list-style-type: none">進行上述(I)(a)及(b)研發項目的企業/機構香港科技園公司及數碼港的培育公司和創科租戶在香港進行研發活動的科技公司每月最高津貼額：<ul style="list-style-type: none">學士：18,000元碩士：21,000元博士：32,000元每名研究人員資助期最長為36個月
再工業化及科技培訓計劃 ¹	<ul style="list-style-type: none">資助企業人員接受高端科技培訓，尤其是與「工業4.0」有關的培訓每間企業的資助上限為每年 50萬元以 2 (政府) : 1 (企業) 的配對方式提供資助企業可要求在培訓課程完成前預先發放部份獲批培訓資助，上限為 50%
科技人才入境計劃 ²	<ul style="list-style-type: none">為輸入海外和內地科研人才，實施快速處理安排適用於在香港有進行13個指定科技範疇研發活動的公司(即人工智能、生物科技、網絡安全、數據分析、金融科技、材料科學、機械人技術、5G通訊、數碼娛樂、綠色科技、集成電路設計、物聯網或微電子)

(IV) 專為科技初創企業而設

創科創投基金 ¹	<ul style="list-style-type: none"> • 與風險投資基金共同投資本地初創企業 • 以約 1 (政府) : 2 (風險投資基金) 的配對比例進行投資 (每個項目上限為投資對象所要求投資總額的 40% 或 3,000萬元, 款額以較低者為準)
香港科技園公司 科技企業投資 基金 ³	<ul style="list-style-type: none"> • 以配對方式與天使投資者或風險投資基金共同投資香港科技園公司初創企業 • 為正在種子輪投資期及在成長階段的初創企業 (A 輪或後期融資) 提供資金 • 每間公司的累計投資金額上限為 4,000萬元
香港科技園公司 培育計劃 ³	<ul style="list-style-type: none"> • 透過三個培育計劃, 即「網動科技創業培育計劃」、「科技創業培育計劃」, 和「生物醫藥科技培育計劃」, 協助不同科技範疇的初創企業渡過創業初期最關鍵的階段 • 計劃為期二至四年 • 視乎不同計劃, 每間培育公司可獲最高86萬元至600萬元的津貼資助
數碼港培育計劃 ⁴	<ul style="list-style-type: none"> • 為科技初創企業提供全面的財政、技術及業務諮詢等支援 • 計劃為期兩年 • 每間培育企業財務資助上限為 50萬元
數碼港創意微型 基金 ⁴	<ul style="list-style-type: none"> • 為具備高發展潛力及創意的資訊及通訊科技初創企業提供種子基金 • 每個項目的資助上限為 10萬元



數碼港投資創業基金 ⁴	<ul style="list-style-type: none"> • 提供前 A 輪投資期的資金，與投資者共同投資數碼港的初創企業 • 每項投資項目的累計投資金額介乎 100萬元至 2,000萬元
大學科技初創企業資助計劃 ¹	<ul style="list-style-type: none"> • 資助本地大學團隊成立科技初創企業 • 每間初創企業的資助上限為每年 150萬元，為期不超過三年

為其他業務提供的支援 *

中小企業市場推廣基金 ⁵	<ul style="list-style-type: none"> • 資助出口推廣活動 • 每間中小企的累計資助上限為 80萬元 • 每次申請上限為 10萬元或核准開支的 50%，以較低款額為準 • 可選擇以實報實銷或首期撥款暨終期撥款方式申請資助 • 最高可獲 75% 的核准政府資助額作為首期撥款
中小企業信貸保證計劃 ⁵	<ul style="list-style-type: none"> • 為中小企業向貸款機構提供信貸保證，以取得貸款，用作 <ul style="list-style-type: none"> - 購置營運設備及器材 - 一般業務用途的營運資金 • 信貸保證上限 <ul style="list-style-type: none"> - 信貸額的 50%；及 - 每間中小企 600萬元

發展品牌、升級轉型及拓展內銷市場的專項基金⁶

- 資助本地非上市企業開拓和發展內地及其他與香港簽署自由貿易協定的經濟體的市場
- 每個項目的資助上限為 **100萬元** 或總核准開支的 **50%**，以較低者為準
- 每間企業的資助上限為 **400萬元**
- 最高可獲核准政府資助額的 **75%** 作為首期撥款

*由工業貿易署提供的資助計劃

¹ <https://www.itf.gov.hk/en/home/index.html>

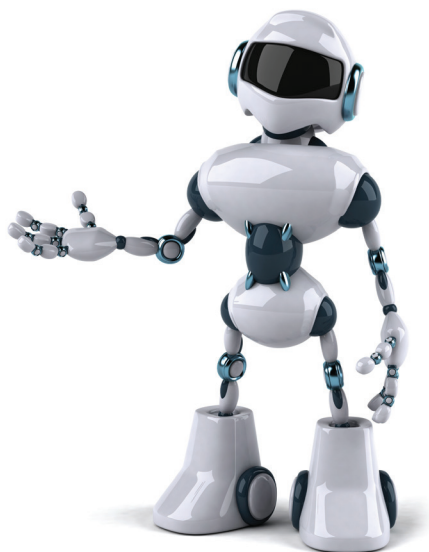
² techtas.itc.gov.hk

³ www.hkstp.org

⁴ www.cyberport.hk

⁵ www.smefund.tid.gov.hk

⁶ www.bud.hkpc.org





How Can Your Enterprise Benefit ?

(I) For Research & Development (R&D)

(a) In-house R&D

Enterprise Support Scheme ¹	<ul style="list-style-type: none">• up to \$10 million per project• on a 1:1 matching basis• you own the IP• you may request an advance payment of up to 50% of the approved matching funding for the first 6 months or up to \$500,000, whichever is the lower
--	---

(b) Working with Local Universities and Other Local Public Research Institutes

Partnership Research Programme ¹	<ul style="list-style-type: none">• you contribute 30% to 50% of the total project cost, the remaining amount would be contributed by the Innovation and Technology Fund• if you contribute 50% of the total project cost, you own the IP
Innovation and Technology Support Programme (platform projects) ¹	<ul style="list-style-type: none">• in collaboration with local public research institutes• you contribute 10% of the total project cost, the remaining amount would be contributed by the Innovation and Technology Fund• you may enjoy favourable terms in using project results commensurate with the level of your contribution, such as early access to the R&D outcomes, discount in future licensing fees, etc.

(c) R&D Cash Rebate

R&D Cash Rebate Scheme ¹	<ul style="list-style-type: none">• obtaining 40% rebate for the following contribution :<ul style="list-style-type: none">- your contribution to R&D projects under (I)(a) and (b) above; or- R&D projects contracted out to local public research institutes
-------------------------------------	--

(d) Enhanced Tax Deduction for Qualifying R&D Expenditures

Enhanced Tax Deduction for Qualifying R&D Expenditures	<ul style="list-style-type: none"> provides a two-tiered enhanced tax deduction for qualifying R&D expenditures incurred by enterprises since 1 April 2018, i.e. 300% for the first \$2 million of the aggregate amount of qualifying R&D expenditures incurred by enterprises and 200% for the remaining amount no cap on the amount of the relevant enhanced tax deduction which applies to all enterprises
--	--

(II) For Technology Adoption

Technology Voucher ¹	<ul style="list-style-type: none"> supports local non-listed enterprises/organisations in using technological services and solutions for <ul style="list-style-type: none"> improving productivity; or upgrading or transforming their business processes up to \$600,000 per enterprise/organisation on a 3 (Government) : 1 (enterprise/organisation) matching basis you may request an advance payment of up to 25% of the approved funding
Public Sector Trial Scheme ¹	<ul style="list-style-type: none"> for conducting of trials in public sector organisations for the R&D outcomes of the following projects in order to support the realisation and commercialisation of local R&D outcomes <ul style="list-style-type: none"> completed R&D projects under the Partnership Research Programme R&D projects of incubatees and graduate tenants of the HKSTPC and Cyberport (up to \$1 million per project) R&D projects of technology companies conducting R&D activities in Hong Kong (up to \$1 million per project)
Re-industrialisation Funding Scheme ¹	<ul style="list-style-type: none"> supports manufacturers to set up smart production lines in Hong Kong up to \$15 million per project on a 1 (Government) : 2 (enterprise) matching basis

(III) Other Support

Patent Application Grant ¹	<ul style="list-style-type: none"> • supports first-time patent applications by locally incorporated companies or Hong Kong permanent residents for their own inventions • up to \$250,000 per approved case
Research Talent Hub ¹	<ul style="list-style-type: none"> • supports the engagement of up to four research talents by <ul style="list-style-type: none"> - enterprises/organisations undertaking R&D projects under (I)(a) and (b) above - incubatees and I&T tenants of the HKSTPC and Cyberport - technology companies conducting R&D activities in Hong Kong • maximum monthly allowance <ul style="list-style-type: none"> - Bachelor: \$18,000 - Master: \$21,000 - Doctor: \$32,000 • the maximum funded period of each research talent is 36 months
Reindustrialisation and Technology Training Programme ¹	<ul style="list-style-type: none"> • supports staff training in advanced technologies, especially those related to “Industry 4.0” • up to \$500,000 per enterprise per year • on a 2 (Government) : 1 (enterprise) matching basis • you may request an advance disbursement of up to 50% of the approved training grant before the completion of training course
Technology Talent Admission Scheme ²	<ul style="list-style-type: none"> • provides a fast-track arrangement for admitting overseas and Mainland technology talent • applicable to companies engaged in R&D activities in Hong Kong in 13 specified technology areas (i.e. artificial intelligence, biotechnology, cybersecurity, data analytics, financial technologies, material science, robotics, 5G communications, digital entertainment, green technology, integrated circuit design, Internet-of-Things or microelectronics)

(IV) Specifically For Technology Start-ups

Innovation and Technology Venture Fund ¹	<ul style="list-style-type: none"> • co-invests with venture capital funds in local start-ups • on an approximately 1 (Government) : 2 (Venture Capital Fund) matching ratio for investment (up to 40% of total investment amount sought by the investee company or \$30 million per deal, whichever is the lower)
HKSTPC Corporate Venture Fund ³	<ul style="list-style-type: none"> • co-invests on a matching basis with angel investors or venture capital funds in start-ups of the HKSTPC • provides funding for technology companies in seed to growth stages (Series A and beyond) • up to \$40 million cumulative investment per company
HKSTPC's incubation programmes ³	<ul style="list-style-type: none"> • the three incubation programmes, i.e. Incu-App, Incu-Tech and Incu-Bio, assist start-ups in various technology fields to get through the most essential inception stage of their businesses • programmes last for 2 to 4 years • depending on individual programmes, up to \$860,000 to \$6 million subsidies per incubatee
Cyberport Incubation Programme ⁴	<ul style="list-style-type: none"> • provides comprehensive financial, technical and business advisory support for technology start-ups • programme lasts for 2 years • up to \$500,000 of financial subsidy per incubatee
Cyberport Creative Micro Fund ⁴	<ul style="list-style-type: none"> • provides seed funding to high potential and innovative start-ups in information and communications technology • up to \$100,000 per project

Cyberport Macro Fund ⁴	<ul style="list-style-type: none"> • provides pre-Series A funding to co-invest with investors in Cyberport start-ups • \$1 million - \$20 million cumulative investment per investee
Technology Start-up Support Scheme for Universities ¹	<ul style="list-style-type: none"> • supports teams of local universities to start technology businesses • up to \$1.5 million per start-up per year for no more than three years

Support for Other Business Activities*

SME Export Marketing Fund ⁵	<ul style="list-style-type: none"> • supports export promotion activities • a cumulative funding limit of \$800,000 per SME • up to \$100,000 or 50% of the approved expenditure per application, whichever is the lower • may opt to apply for funding support through reimbursement or initial payment cum final payment • may receive up to 75% of the approved government funding as initial payment
SME Loan Guarantee Scheme ⁵	<ul style="list-style-type: none"> • provides loan guarantee to SMEs to secure loans from lending institutions for <ul style="list-style-type: none"> - acquiring business installations and equipment, or - working capital for general business uses • guarantee amount <ul style="list-style-type: none"> - up to 50% of the loan amount; and - up to \$6 million per SME

Dedicated Fund on
Branding, Upgrading
and Domestic Sales ⁶

- supports non-listed local enterprises to explore and develop markets in the Mainland and other economies with which Hong Kong has signed Free Trade Agreements
- up to **\$1 million** or **50%** of the approved cost per project, whichever is the lower
- up to **\$4 million** per enterprise
- up to **75%** of the total approved Government funding as initial payment

* Funding schemes under the Trade and Industry Department

¹ <https://www.itf.gov.hk/en/home/index.html>

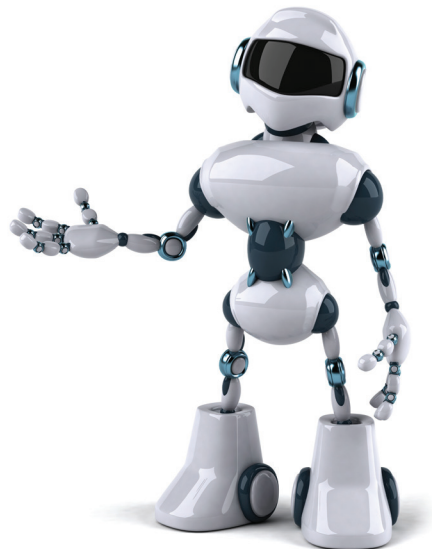
² techtas.itc.gov.hk

³ www.hkstp.org

⁴ www.cyberport.hk

⁵ www.smefund.tid.gov.hk

⁶ www.bud.hkpc.org





查詢 Enquiry

如對創新科技署提供的資助計劃有任何查詢，可透過以下途徑與我們聯絡：

If you have any question about the funding schemes provided by the Innovation and Technology Commission, please contact us through the following channels:

地址：九龍觀塘海濱道135號宏基資本大廈10樓

Address：10/F, Rykadan Capital Tower, 135 Hoi Bun Road,
Kwun Tong, Kowloon

電郵

e-mail：enquiry@itf.gov.hk

電話

Telephone：3655 5678